

# Wanaka Starling Regatta

November 16<sup>th</sup> and 17<sup>th</sup>, 2024

## Organising Authority

Wanaka Yacht Club, Lakeside Road, Wānaka, NZ 9305

## Notice of Race

NB: The notation '[DP]' in a rule in the Notice of Race means that the penalty for a breach of that rule may, at the discretion of the protest committee, be less than disqualification. The notation '[NP]' in a rule means that a boat may not protest another boat for breaking that rule. This changes RRS 60.1(a).

### 1. RULES

1.1 The event is governed by the rules as defined in *The Racing Rules of Sailing*.

1.2 The Yachting New Zealand Safety Regulations Part 1 shall apply.

1.3 Starling class rules will apply.

1.4 RRS 44.1 is changed so that the Two-Turns Penalty is replaced by the One-Turn Penalty

1.5 RRS Appendix T, Arbitration will apply.

### 2. SAILING INSTRUCTIONS

2.1 The sailing instructions will consist of the instructions in RRS Appendix S, Standard Sailing Instructions, and Supplementary Sailing Instructions that will be on the official notice board located at <https://wanakayachtclub.co.nz/regatta/>. A copy of the Supplementary Sailing Instructions will be posted on the WYC Notice board. No printed copies will be available.

2.2 [DP] While racing, from the first warning signal until the end of the last race of the day, except in an emergency, a boat shall not make voice or data transmissions and shall not receive voice or data communication that is not available to all boats.

### 3. ELIGIBILITY AND ENTRY

3.1 The event is open to Starling Class Yachts.

3.2 Eligible boats may enter by completing the entry form on site between 8am and 9am, Saturday 16th November.

### 4. FEES

4.1 Entry fee of \$50.00 payable on completion of entry form

## 5. ADVERTISING

5.1 Boats may be required to display advertising chosen and supplied by the organizing authority.

## 6. SCHEDULE

6.1 Activity	Date	From	To
<i>Registration</i>	<i>16<sup>th</sup> Nov</i>	<i>0800</i>	<i>0900</i>
<i>Briefing</i>	<i>16<sup>th</sup> Nov</i>	<i>0900</i>	<i>0930</i>

6.2 Dates of racing:

Date	Number of Races	First Warning Signal
<i>16<sup>th</sup> Nov</i>	<i>To be advised at briefing</i>	<i>1000</i>
<i>17<sup>th</sup> Nov</i>	<i>To be advised at briefing</i>	<i>1000</i>

6.3 Target time for races is 25 minutes.

6.4 On the last scheduled day of racing no warning signal will be made after 1500

## 7. EQUIPMENT INSPECTION

7.1 Boats may be inspected at any time.

## 8. VENUE

8.1 Addendum A shows the plan of the event venue.

8.2 Addendum B shows the location of the racing areas.

## 9. COURSES

9.1 The courses will be as per RRS Appendix S, Standard Sailing Instructions – Specific courses to be advised at briefing.

## 10. SCORING

10.1 Four races are required to be completed to constitute a series.

10.2 (a) When fewer than 5 races have been completed, a boat's series score will be the total of her race scores.

(b) When from 5 to 7 races have been completed, a boat's series score will be the total of her race scores excluding her worst score.

(c) When more than 7 races have been completed, a boat's series score will be the total of her race scores excluding her worst 2 scores.

## 11. SUPPORT PERSON VESSELS

11.1 [DP] All support person vessels shall always have an engine safety cut out switch (kill

cord) attached to the driver while the engine is running, unless prior written exemption has been provided by the Organising Authority.

**11.2 [DP]** All support boats shall comply with local bylaws at all times. Note 5 knot permanent speed restriction areas between the marina and Eely Point.

## **12. RISK STATEMENT**

**12.1** RRS 3 states: 'The responsibility for a boat's decision to participate in a race or to continue to race is hers alone.' By participating in this event each competitor agrees and acknowledges that sailing is a potentially dangerous activity with inherent risks. These risks include strong winds and rough seas, sudden changes in weather, failure of equipment, boat handling errors, poor seamanship by other boats, loss of balance on an unstable platform and fatigue resulting in increased risk of injury. Inherent in the sport of sailing is the risk of permanent, catastrophic injury or death by drowning, trauma, hypothermia or other causes.

## **13. INSURANCE**

**13.1** It is recommended that each participating boat shall be insured with valid third-party liability insurance with a minimum cover of \$1,000,000 per incident or the equivalent.

## **14. PRIZES**

**14.1** Prize Giving will be held after racing on the 17<sup>th</sup> November 2024

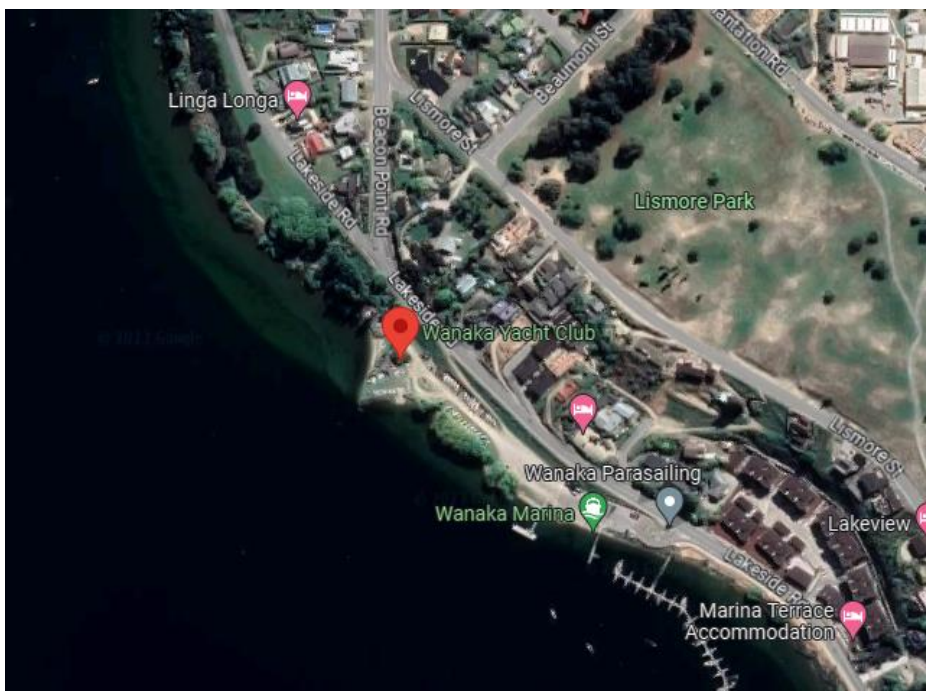
## **15. FURTHER INFORMATION**

For further information please contact:

Roger North [rogerbnorth@gmail.com](mailto:rogerbnorth@gmail.com)

## APPENDUM A

**VENUE: Wanaka Yacht Club, Riverside Drive , Wanaka**



## APPENDUM B Racing Area

**Lake Wanaka within boundaries below**

